



Low Emission  
Strategies  
Building on Good Practice

# The Low Emission Toolkit

**Katherine Stanger  
(Green Sphere)**

web: [www.lowemissionstrategies.org](http://www.lowemissionstrategies.org)  
email: [info@lowemissionstrategies.org](mailto:info@lowemissionstrategies.org)



# The Low Emission Toolkit

**...getting a number on the table...**

**Comparing vehicle technologies**

**Assessing procurement  
strategies**

**Evaluating impact of planning  
measures**



# Building the tool

- 2009 Defra AQ Grant and Greenwich s106 funds
- Contract with TTR, CERC and RPS
- Produced Version 1.0 (Beta Version)



# Low Emissions Toolkit

Version 1.0: Final phase 1 tool presented as a Beta version for controlled trial by external users and in-house testing and proving.



## Application 1 Technology Guidance

## Application 2 Fleet Tool

## Application 3 Development Tool

<b>Aims</b>	Describe technology available in 2010-2015 market. Provide comparative information at vehicle level on emissions (PM10, NOX and GHG), performance, costs and logistical issues. Flag important co-factors.	Provide analysis of costs and benefits of adopting green fleet options in the future (2010-15). Including emissions reductions (PM10, NOX and GHG), damage impacts (where possible) and associated marginal costs. Tailored to characteristics of a specific fleet.	Provide analysis of costs and benefits of Low Emission Strategies for development sites (e.g. through section 106 agreements). Including emissions reductions (PM10, NOX and GHG), damage impacts (where possible) and associated marginal costs.
<b>Purpose</b>	Enable an informed debate and to help users ask the right questions and be aware of all the options.	Provide easy to use scenario tool for fleet operators considering green fleet renewal/procurement strategies	Provide easy to use scenario tool for planning officers to aid design /justification of planning based LES
<b>Example query</b>	I'm a local authority environment manager and I want to have an informed discussion with the LA fleet manager regarding pros and cons of specific vehicle technologies.	I'm a local authority fleet manager, with 300 transit vans, and a renewal rate of 20% per year. What low emission vehicle technologies are available, what is the cost increment and what are the emissions benefits compared with continuing as business as usual?	I'm a local authority planning officer, assessing a proposed development of 300 new houses. What are the transport emissions impacts of this proposal? What transport emission reduction measures could I negotiate through a section 106 agreement and what benefits would they bring? What emissions remain for consideration?

About

Quick Start User Guide

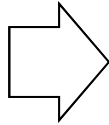
Full User Guide

Vehicle Technology Guide

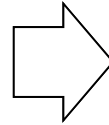
# TECHNOLOGY GUIDANCE (Application 1)

Compare individual vehicles

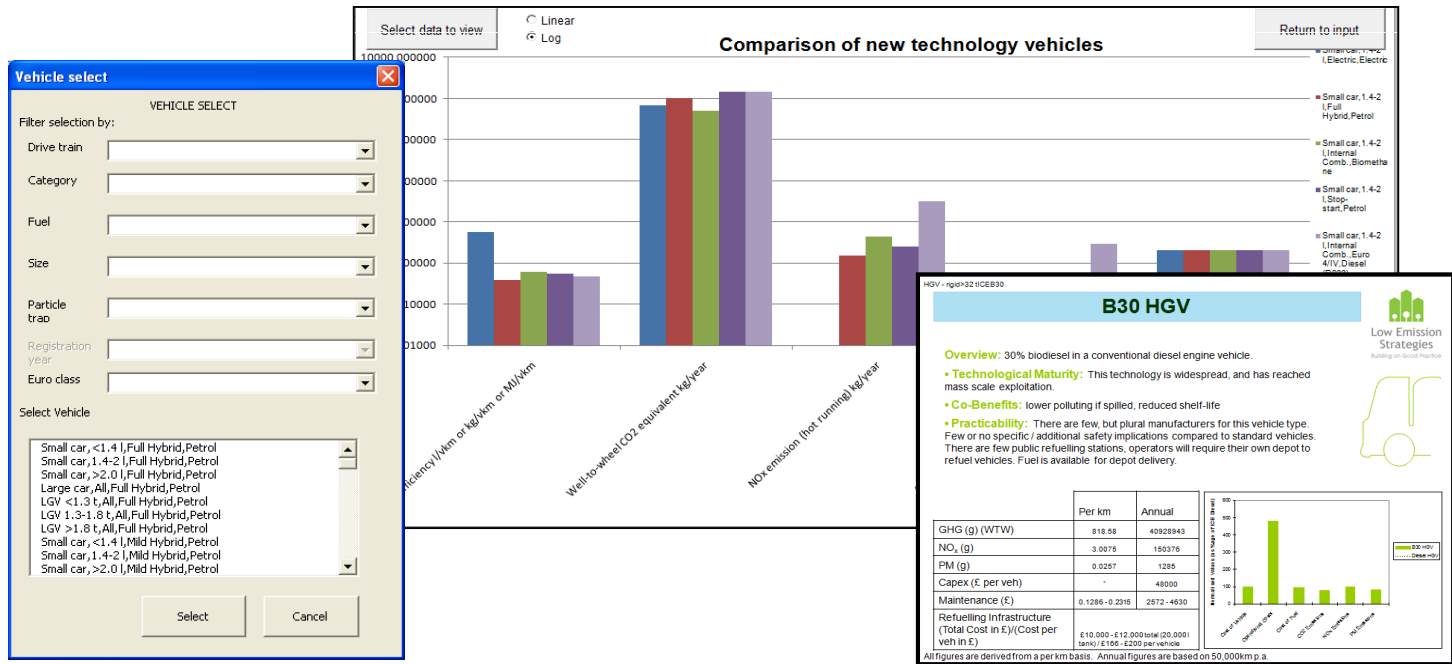
Select vehicles



Compare emissions, costs, etc.



Output results



# FLEET TOOL (Application 2)

Assess options for replacing fleets (bottom-up)



**Input selection:**

Current situation

With replacements

Start year: 2010

Final year: 2020

Year dependent replacement

Constant replacement rate

Replace at age: 10 years

Add / modify / delete vehicle

Add custom vehicle

Clear all

Region of the country: London / central

Type of town/city: [dropdown]

Predominant journey type: Urban

Electric charging points: None

Biomethane infrastructure: None

Change

Add infrastructure

Operational aspects data

View defaults

Output graph by vehicle

Custom graph

USER INPUT

ORIGINAL VEHICLE

R

Particle trap	Registration year	Euro class	Operational aspects	BAU replacement	Replace by vehicle
No	2000	Euro 2/II		EURO class replacement	LGV 1.3-1.8 tAI Comb.,PF

**Fleet components and fleet total (2011)**

Select data to view:  Linear  Log

Select year: 2011

Return to input | Custom graph

# DEVELOPMENT TOOL (Application 3)

**Estimate transport emissions from development sites**  
**Assess abatement options**  
**(top-down)**

Define development

Review baseline emissions

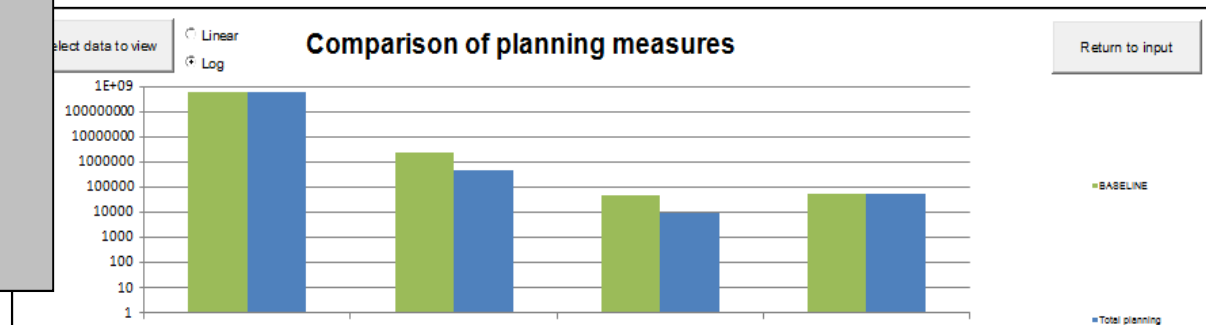
Select planning measures

Compare scenarios

No.	Component name	Predominant journey type	Development type
1	Shopping Centre	Urban	Non-residential

Return to input    View planning measures    View travel plans

Measure type	Sub-category	Use
Vehicle substitution / deployment	Fleet/Pool cars	<input type="checkbox"/>
	Service fleet	<input checked="" type="checkbox"/>
	Public transport fleet	<input checked="" type="checkbox"/>
Specify impact		
Fleet transformation incentives	Site based-low emission zone	<input type="checkbox"/>
	Emission based parking allocation	<input checked="" type="checkbox"/>
Specify impact		
Provision of low emission infrastructure	Electric charging points	<input checked="" type="checkbox"/>
	Biomethane infrastructure	<input type="checkbox"/>
Car clubs	Standard car club	<input type="checkbox"/>
	Low emission car club	<input type="checkbox"/>
User-based charging	Congestion charging	<input type="checkbox"/>
	Emission based parking charges	<input type="checkbox"/>
	Emission based user charging	<input type="checkbox"/>
Travel plans	Parking restraint	<input checked="" type="checkbox"/>
	Parking charges	<input type="checkbox"/>
	Cash-out for not using parking space	<input type="checkbox"/>
	Car sharing	<input type="checkbox"/>
	Public transport	<input type="checkbox"/>
	Walking	<input type="checkbox"/>
	Cycling	<input type="checkbox"/>
	Local recruitment and/or relocation package	<input type="checkbox"/>
	Personalised travel planning	<input type="checkbox"/>
	Home working	<input type="checkbox"/>
Modify overall travel plan		



# Underlying principles

- Transparent
- Flexible
  - For purpose
  - Data and assumptions
  - For future development
- Promote action



# Next Steps

- 2010 AQ Grant – further testing and development
- User testing of Version 1.0
  - Currently only signing up Local Authorities
  - Keen to engage with other parties
- Development priorities / tweaks
  - Full release of Version 1.1
- Review options for developing Version 2.0



# More information



- Speak to us / email:

[info@lowemissionstrategies.org](mailto:info@lowemissionstrategies.org)

[katherine@green-sphere.co.uk](mailto:katherine@green-sphere.co.uk)

- Sign up to LES Newsletter
- Toolkit page on LES Website:  
[www.lowemissionstrategies.org](http://www.lowemissionstrategies.org)



**Low Emission Strategies**  
Building on Good Practice

The LES Newsletter - 21st June 2011

**Welcome**

Welcome to the 12th edition of the Low Emission Strategy (LES) Newsletter!

The LES work programme has moved into a new phase. Between April and September 2011, we are focussing on delivery of key projects to develop our tools and guidance. At the same time, we are reviewing how the Partnership will operate from 2012 and beyond. Your views on this are always very welcome – many thanks to those who completed our recent survey (the hamper was awarded to Cerys Williams, of East Herts Council)

We'd like to thank everyone who has subscribed to the newsletter. We hope it gives planners, developers and environmental practitioners an understanding of how LES can inform practice and policy where you are.

Katherine Stanger - (LES Programme Manager)

**Latest News**

Local Action on Transport Emissions can save over £1 Billion

In April, the LES Partnership and Local Government Regulation published a joint report on action taken by local authorities to address transport emissions.

The report estimated that local action on

**Latest Events**

**LES Partnership Events**

13th July 2011  
Low Emission Tools Workshop  
Taking place in Central London.  
[Contact us here](#) if you are interested in attending.

**Other Events of Interest**

21st June 2011  
IAPSC conference at the Showroom Cinema and Workstation, central Sheffield. Includes a presentation by Gary Mahoney on the work of the LES Partnership.  
[Click here for details](#)

23rd June 2011  
Conference: Spatial Planning for Health  
University of West of England  
[Click here for details](#)